



INDOFINE Chemical Company, Inc.

121 Stryker Lane, Bldg. 30, Suite 1 • Hillsborough, NJ 08844 • U.S.A.

Phone: (908) 359-6778 • FAX: (908) 359-1179

website: www.indofinechemical.com

e-mail: chemical@indofinechemical.com

CERTIFICATE OF ANALYSIS

Catalog Number: 06-1088

Product Name: **PUNICALAGIN**

CAS Number: [65995-63-3]

Lot Number: 2209705

Chemical Formula: $C_{48}H_{28}O_{30}$

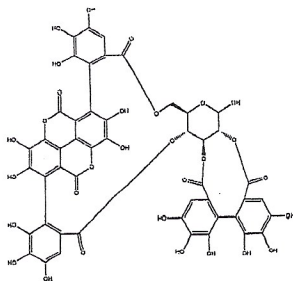
Molecular Weight: 1084.72

Appearance: Yellow-green powder

Water Content: 2.9%

Storage: Store in a cool, dry place. Protect from light.

Purity(HPLC): 98.3%



Prepared by:
Ramesh Mandadi
Ramesh Mandadi
Director of Operations

Reviewed and Approved by:
Sujata Moton
Sujata Moton
VP



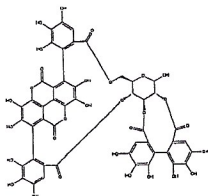
INDOFINE Chemical Company, Inc.

121 Stryker Lane, Bldg. 30, Suite 1 • Hillsborough, NJ 08844 • U.S.A.

Phone: (908) 359-6778 • FAX: (908) 359-1179

website: www.indofinechemical.com

e-mail: chemical@indofinechemical.com



HPLC ANALYSIS

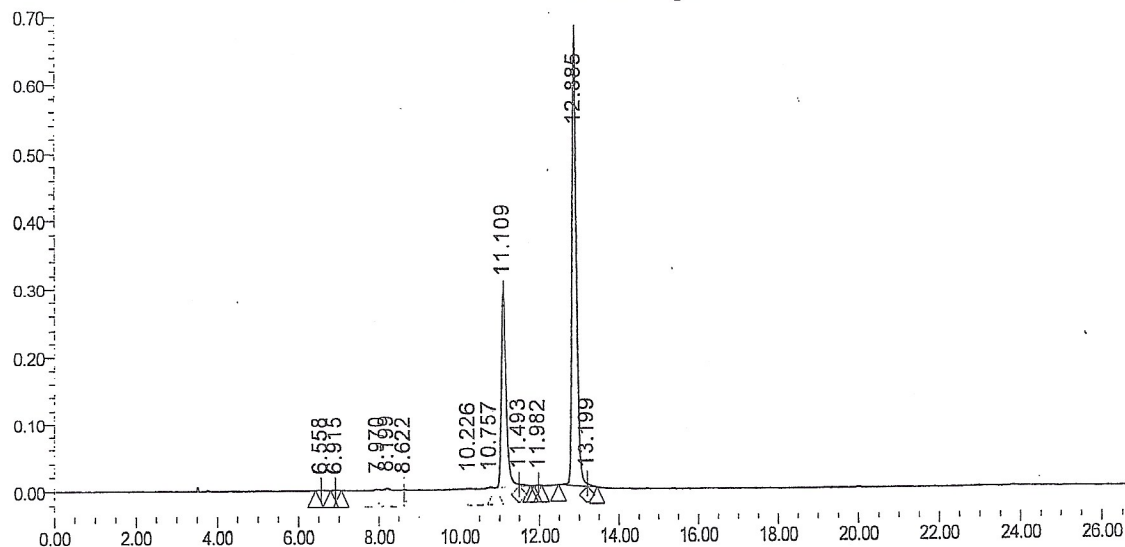
Catalog No.: 06-1088
Product Name: Punicalagin
Lot No.: 2209705

SAMPLE INFORMATION

Sample Name: Punicalagin
Sample Type: Control
Vial: 118
Injection #: 1
Injection Volume: 10.00 ul
Run Time: 30.0 Minutes

Acquired By:
Sample Set Name
Acq. Method Set: Punicalagin
Processing Method: sample
Channel Name: PDA Ch1 258nm@4.8nm
Proc. Chnl. Descr.: PDA Ch1 258nm@4.8nm

Auto-Scaled Chromatogram



Peak Results

| Name | RT | Area | % Area | Height (µV) | USP Plate Count | USP Resolution |
|------|--------|---------|--------|-------------|-----------------|----------------|
| 1 | 6.558 | 7468 | 0.10 | 625 | | |
| 2 | 6.915 | 8483 | 0.11 | 1144 | | |
| 3 | 7.970 | 15062 | 0.19 | 1673 | | |
| 4 | 8.199 | 24950 | 0.32 | 2951 | | |
| 5 | 8.622 | 7287 | 0.09 | 909 | | |
| 6 | 10.226 | 7715 | 0.10 | 841 | | |
| 7 | 10.757 | 9898 | 0.13 | 1479 | | |
| 8 | 11.109 | 2510697 | 32.23 | 291144 | | |
| 9 | 11.493 | 25652 | 0.33 | 2619 | | |
| 10 | 11.982 | 4472 | 0.06 | 790 | | |
| 11 | 12.885 | 5144356 | 66.03 | 666738 | | |
| 12 | 13.199 | 24607 | 0.32 | 4125 | | |